

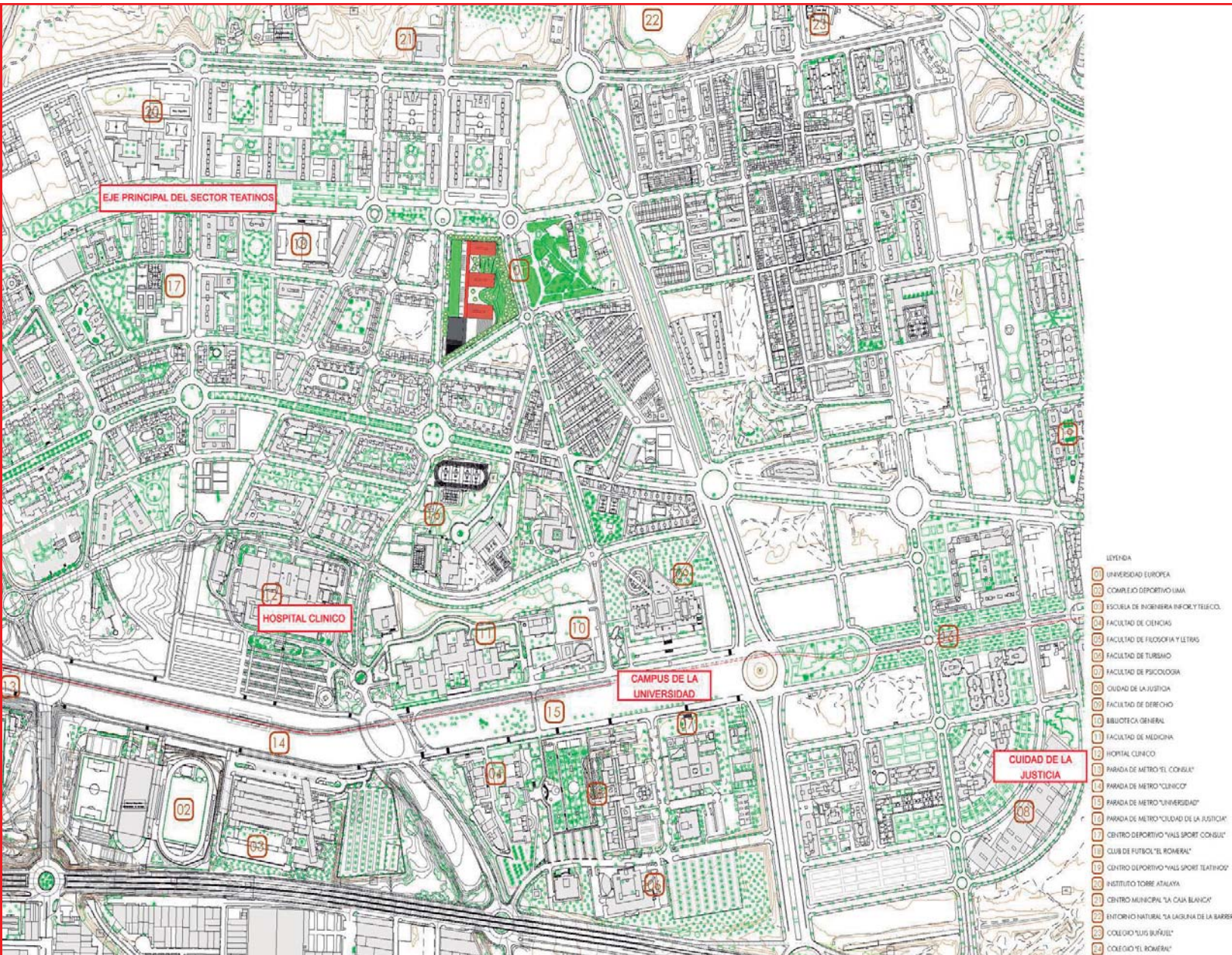
# EUROPEAN UNIVERSITY OF ANDALUSIA MALAGA

*A COMMITMENT TO INNOVATION AS A REFLECTION OF ITS TEACHING ACTIVITY*



**ue** Universidad  
Europea

**ESTUDIO SEGUI**  
ARQUITECTURA Y PLANEAMIENTO



# 1 - THE LOCATION:

The proposal is located in the new and important residential sector of Teatinos, adjacent to the large facilities of the Hospital Clínico, the City of Justice and the University Campus, which, with its proximity to the public transport network (Metro and Bus), connects it with the rest of the areas of the City and its Costa del Sol.

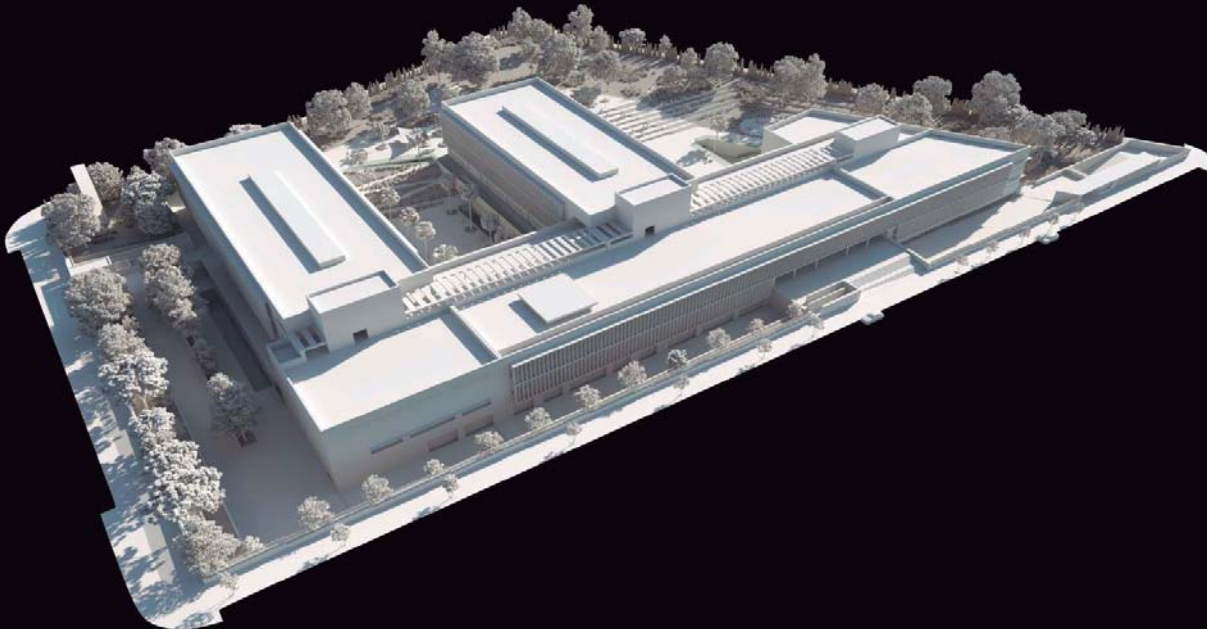
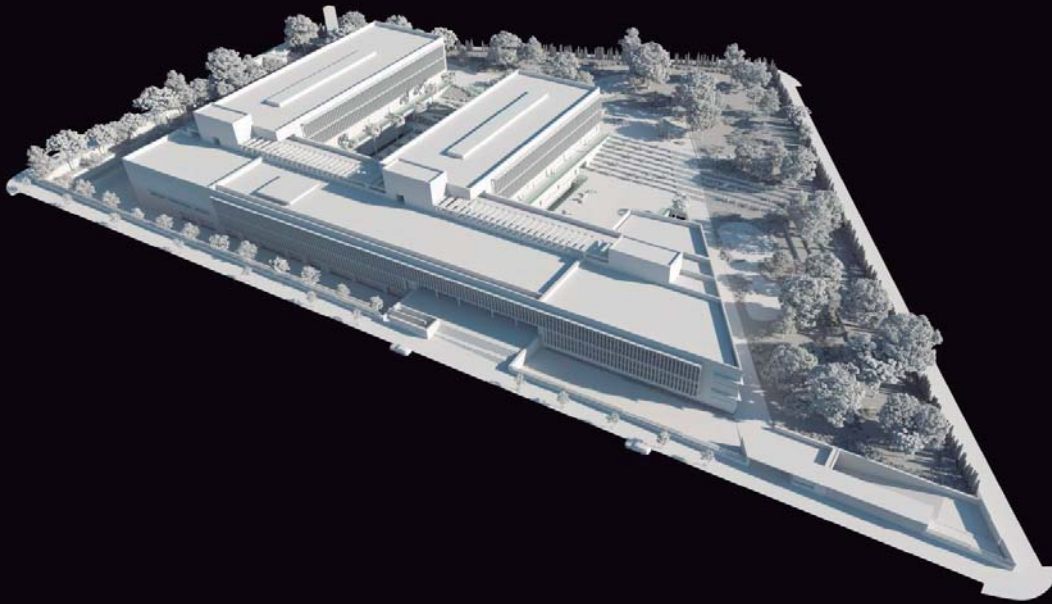
- LEYENDA
- 01 UNIVERSIDAD EUROPEA
- 02 COMPLEJO DEPORTIVO LIMA
- 03 ESCUELA DE INGENIERIA INFORMÁTICA Y TELECOMUNICACIONES
- 04 FACULTAD DE CIENCIAS
- 05 FACULTAD DE FILOSOFÍA Y LETRAS
- 06 FACULTAD DE TURISMO
- 07 CIUDAD DE LA JUSTICIA
- 08 FACULTAD DE DERECHO
- 09 BIBLIOTECA GENERAL
- 10 FACULTAD DE MEDICINA
- 11 HOSPITAL CLINICO
- 12 PARADA DE METRO "EL CONSUELO"
- 13 PARADA DE METRO "CLINICO"
- 14 PARADA DE METRO "UNIVERSIDAD"
- 15 PARADA DE METRO "CIUDAD DE LA JUSTICIA"
- 16 CENTRO DEPORTIVO "VALS SPORT CONSUELO"
- 17 CLUB DE FUTBOL "EL ROMERAL"
- 18 CENTRO DEPORTIVO "VALS SPORT TEATINOS"
- 19 INSTITUTO TORRE ATALAYA
- 20 CENTRO MUNICIPAL "LA CAJA BLANCA"
- 21 ENTORNO NATURAL "LA LAGUNA DE LA BARRERA"
- 22 COLEGIO "SUS BUÑUELL"
- 23 COLEGIO "EL ROMERAL"

Image: A 'teaching city' within the city



Main façade and view of the general access to the University, dignifying its presence in the city.





## 2 - THE PROPOSAL:

It is conceived as a 'small city' within the city, where its teaching activity spaces are structured through an axis in the form of a 'street-gallery', relationship spaces such as 'squares' and gardens of the 'Meadow', or places of coexistence such as the 'Terrace-Viewpoint'..., thus facilitating the continuities and spatial relations required by a teaching complex of these characteristics.

*Image: General views of the educational complex*



### 3 - THE ENTRANCES

The main entrance to the teaching centre is from a large double-height vestibule overlooking the gardens of the campus, with access to the car parks connected to the general service areas. A second independent entrance to the Dentistry Centre and a third service entrance make up the three controlled accesses to the University campus.

*Image: Views of the gardens from the main entrance hall.*





#### 4 - THE AXIS OF THE 'STREET-GALLERY'

The 'Street-Gallery' becomes the structuring axis of the educational complex, facilitating the clarity of circulations and communications with all the uses of the complex, both the Assembly Hall and the Library with zenithal lighting and its garden area, the Cafeteria-Restaurant connected with the gardens, Multipurpose Hall and the Administrative Services, Management, Tutorials..., as well as with the different bodies of the Classrooms and Laboratories.

*Image: View of the 'Street - Gallery'.*



## 4B- THE LIBRARY

The library space is designed as a set of didactic, work meeting and documentary consultation rooms distributed at double height with zenithal lighting, connecting on the lower floor with a 'chill out' type garden that is incorporated into the library itself as a space for reflection and rest..

*Image: View from the lower floor with the garden and the zenithal light with the double height.*





## 5 - THE CLASSROOMS AND LABORATORIES

The 'Classrooms' are planned in two bodies that are structured as communicated spaces with their living areas on each floor, connecting with the 'Laboratories' through their galleries open to the landscaped space of the 'Meadow'. Their façades are resolved with elements of 'parsoles' that control the climatic orientations and views from the outside..

*Image: Areas adjoining La Pradera and the Classrooms and Laboratories area.*



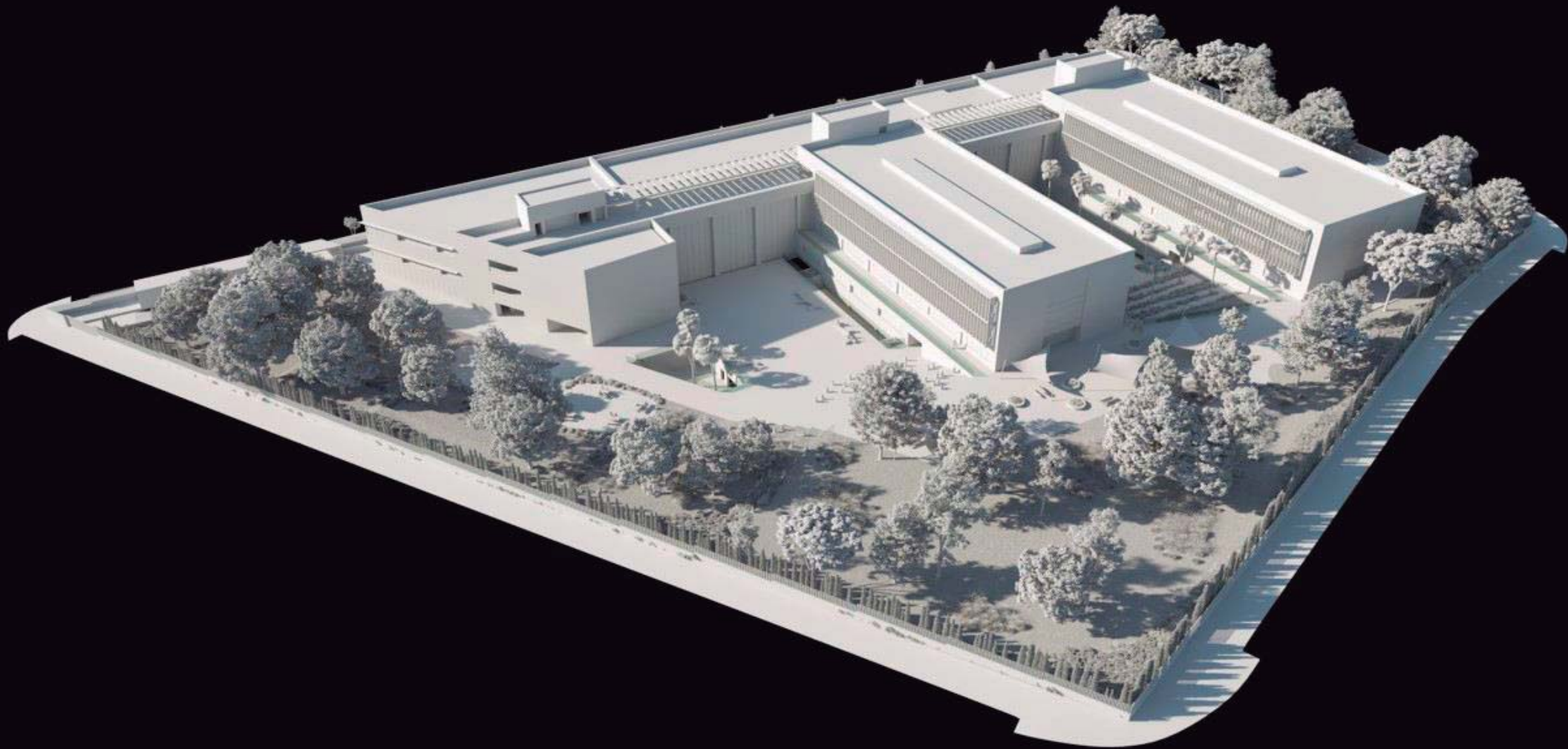
## 6- THE “PRADERA” AND ITS COLLECTIVE SPACES

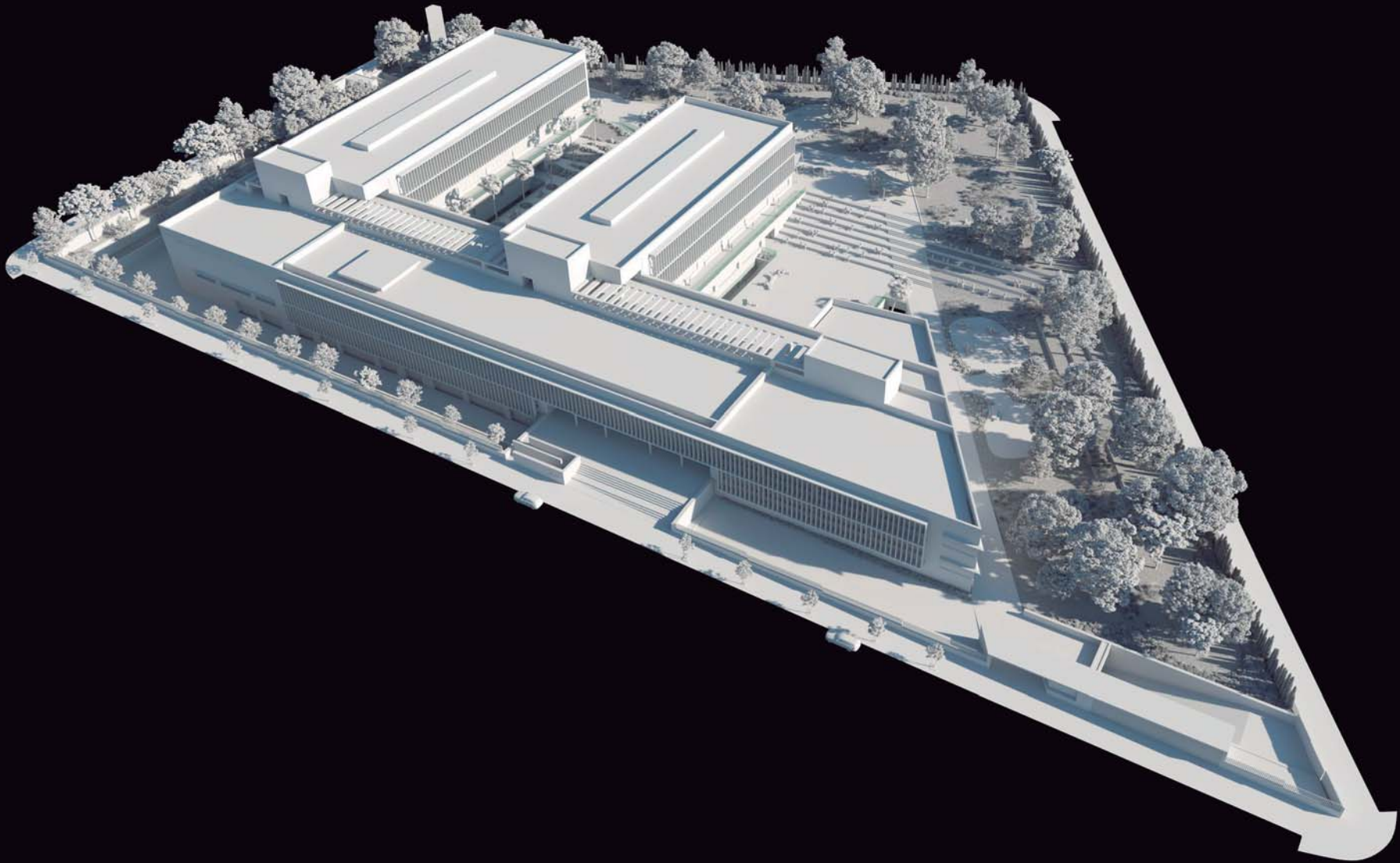
The gardens of the ‘Pradera’ acquire an important relational value as a ‘backdrop’ to the teaching complex, visually integrating with the adjoining La Peña Park to enhance its landscape perception. The green areas of the ‘Pradera’ are introduced into the Classroom and Laboratory spaces of the semi-basement through staggered gardens and an open-air Auditorium that provide spatial continuity and natural lighting.

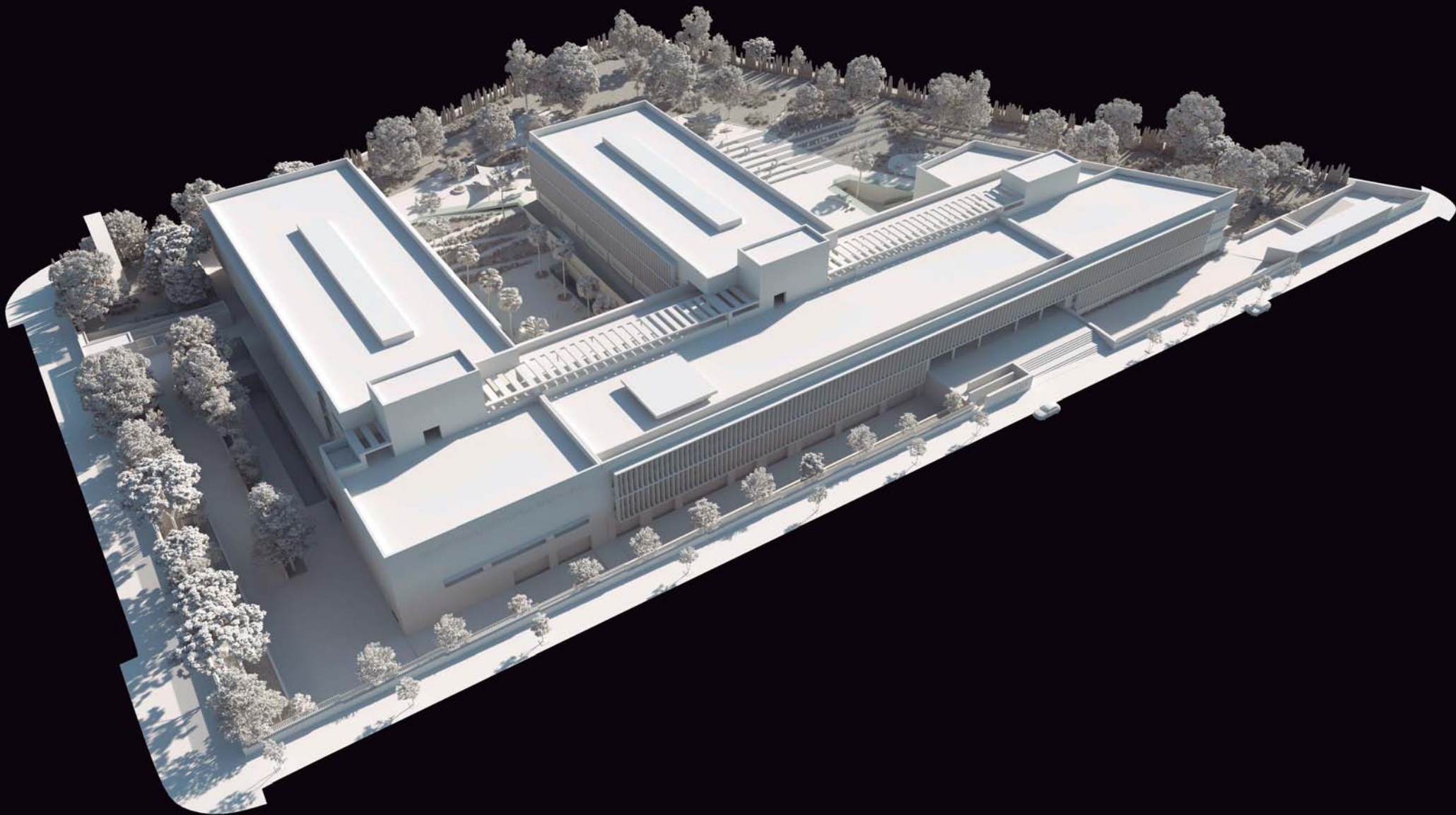
*Image: The open-air Auditorium and its garden areas.*

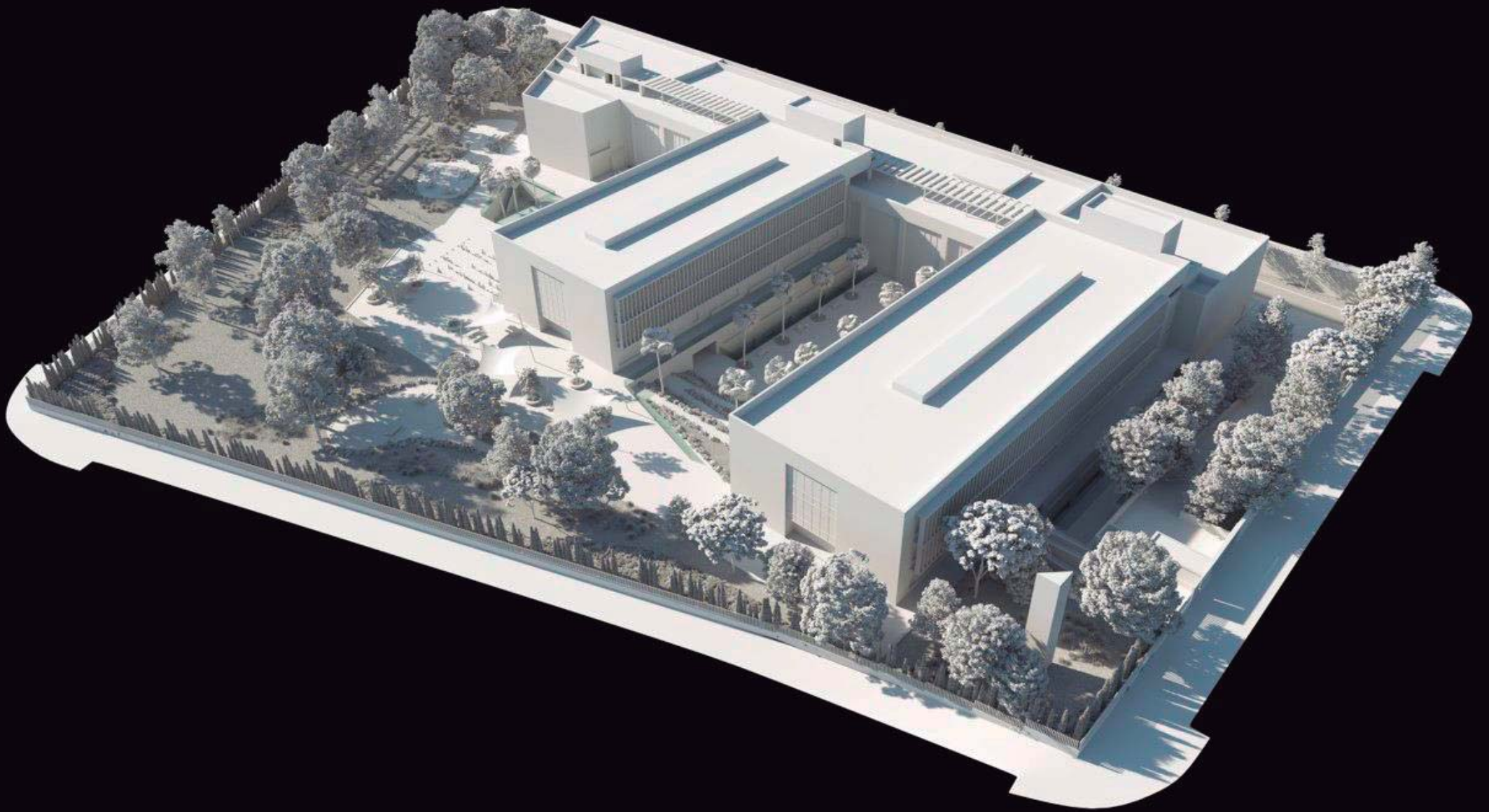
An architectural rendering of a modern, multi-story building. The building features a long, low profile with a facade of vertical glass panels. A prominent entrance is covered by a wide, flat overhang. The scene includes a street with a car, a sidewalk with pedestrians, and young trees. The word "IMAGES" is overlaid in large, bold, black letters across the center of the image.

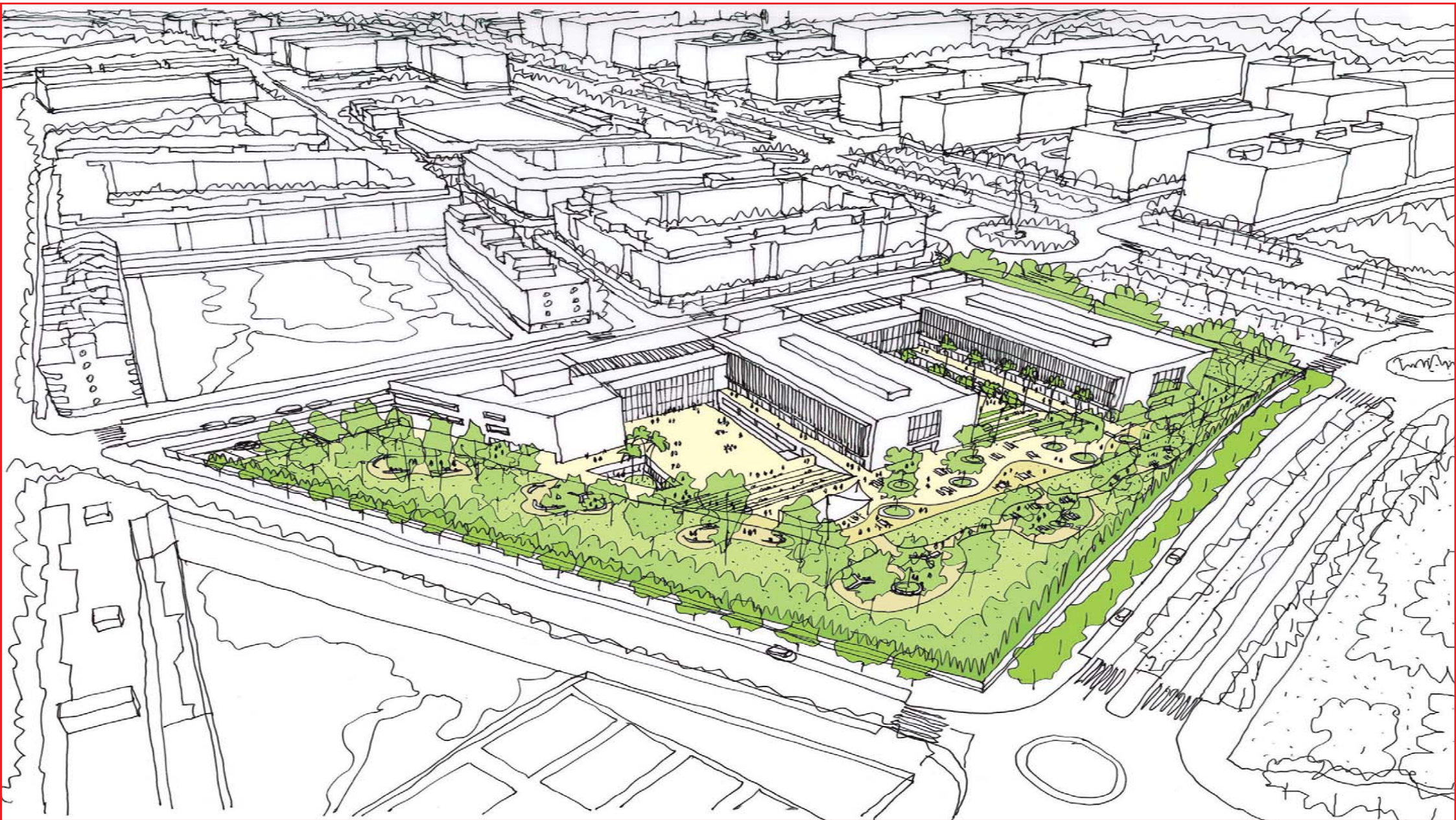
# IMAGES

















Universidad  
Europea ANDALUCÍA















ue Universidad Europea













